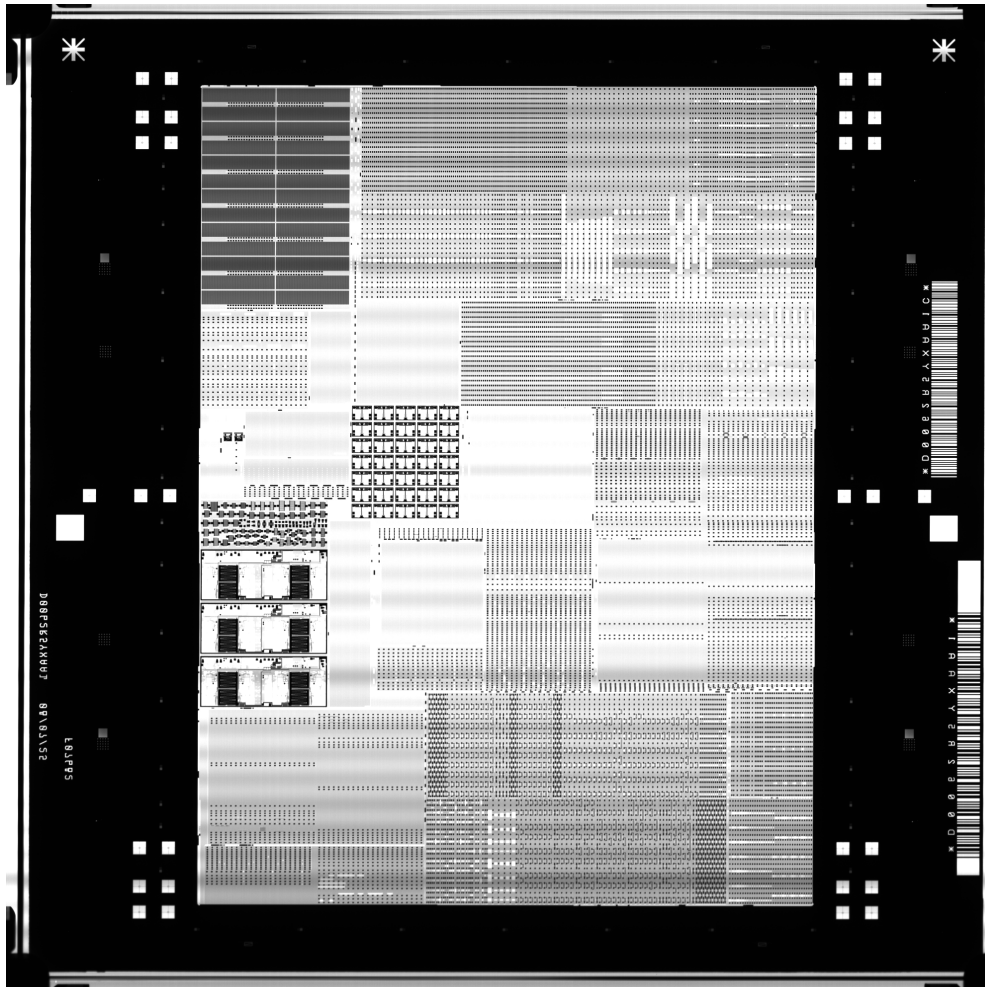


Storm 3000 Inspection Report



Base

Machine Name: DESKTOP-AA18S5A

STORM FMID: D0062R5YXAA1-564J0101-P200-0-2-
20250716124758

Bar Code: D0062R5YXAA1C

Inspect Date: 2025-07-16 12:48:36

Inspect Duration: 0:32:11

Recipe Name: rcp_DB_1

lotNo: HD-1

DataPrepare

JOBName: D0062R5YXAA1-564J0101-P200

DB FilePath: X:\564J01.oas

Col Row: [1249,926]

Area(GDS): [-48863340,64862807],[48860716,-64864263]

Size(mm): [97.724056,129.72707]

Inspect Area

Start(X,Y): 65.9317,47.1014

End(X,Y): -63.7942,-50.6226

Base Line

Mark Size: [200,200]

Stage Positon(X,Y,Z): -66.9323,66.2383,-0.0086

Reference Position(X,Y): -68,000,000.0000,-68,000,000.0000

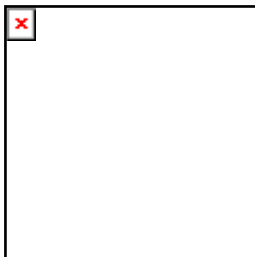
Alignment

Mark Size: [200,200]

Accept Score: 0.7000

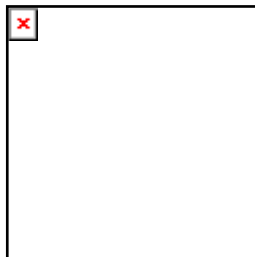
Rotate Angle: -0.0621

Fine1



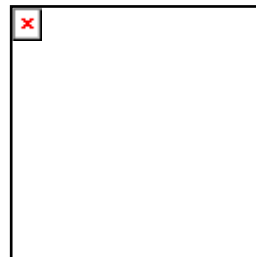
(24X(0.25)),
(63.9826,66.0536,-0.0099)

Fine2



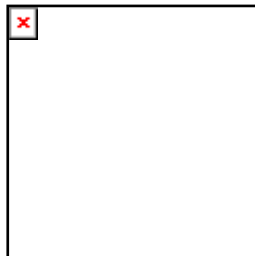
(24X(0.25)),
(-67.0186,66.1857,-0.0086)

Fine3



(24X(0.25)),
(-67.1526,-69.8142,-0.0046)

Ref



(24X(0.25)),
(-67.0186,66.1857,-0.0086)


Inspect Param

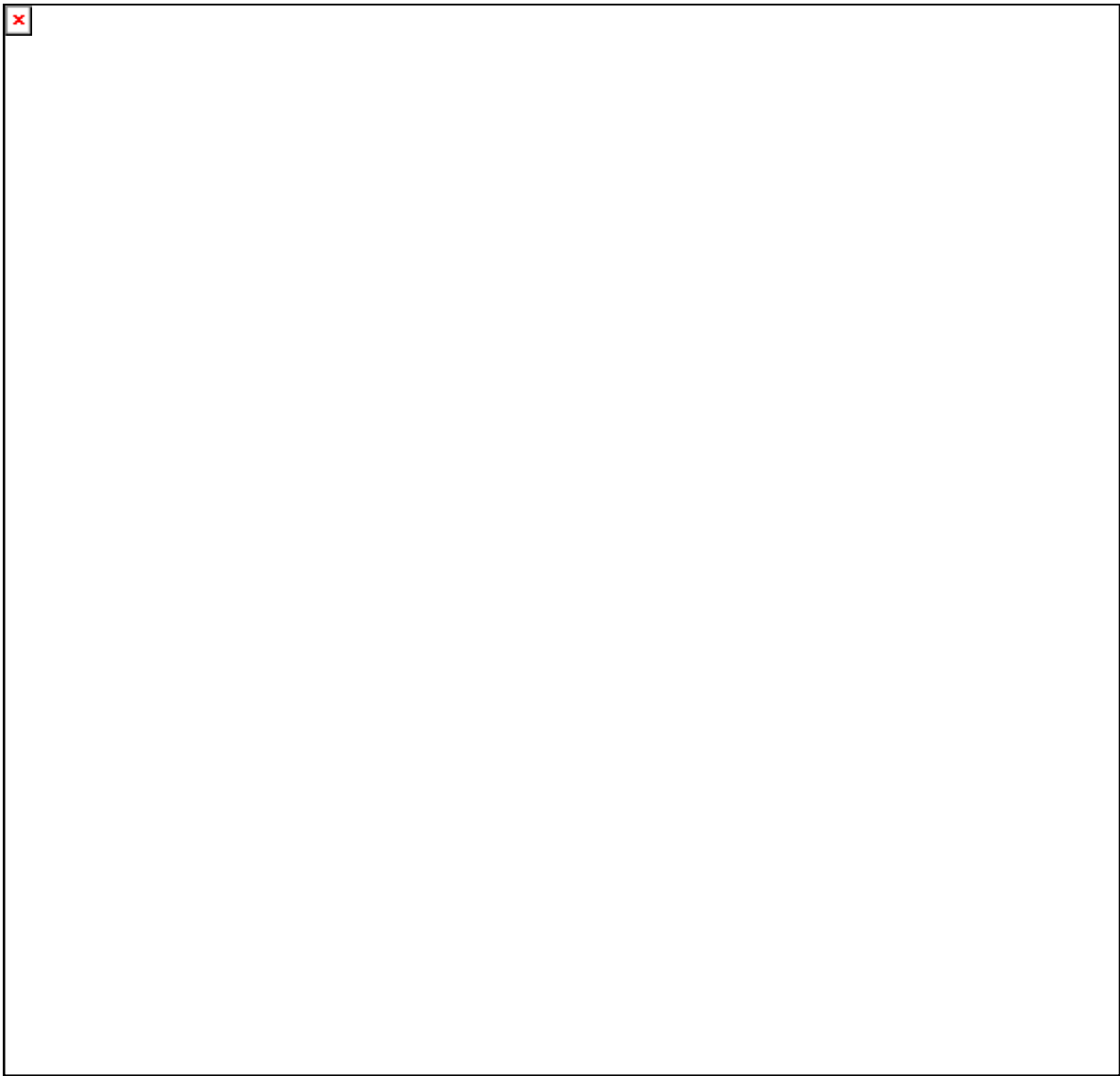
Light Source: Transmission
Lens: 24X(0.25)
Power(%): 19
Inspect Speed: 18
Paddle Rotation Angle: 0
Algorithm Type: ST002
Dark Area Grayscale: 7
Bright Area Grayscale: 220
X Difference(μm): -0.038 μm
Y Difference(μm): -0.068 μm
Inner Round: 0.3 μm
OuterRound: 0.3 μm
Transmission Stage: 128
Registration Mode: Accurate

Algorithm Param

CD Defect: Resolution Unilateral: 0.2 μm ,
Bilateral: 0.2 μm
Island Defect: Resolution: 0.2 μm , Sensitivity(%): 15
Pinhole Defect: Resolution: 0.2 μm , Sensitivity(%): 7
Edge1 Defect: Edge1DefectLevel: Height
Corner Defect: Middle
DefectCombine: True
CNT Defect: -
CSH Defect: -
CSV Defect: -
Gray Defect: GrayLevel: Middle
Edge2 Defect: Edge2DefectLevel: Height

Defect

	
---	--



defect classification summary

No.	A	B	C	D
1	0	0	0	0
2	0	0	0	0
3	0	0	0	0
4	0	0	0	49
	0	0	0	49
			Total	49

Defect List

Defect Id	X Relative Postion (μm)	Y Relative Postion (μm)	Defect Type	Size(um^2)	Classification
1	#Error	#Error	ISLAND	0.20*0.20	4D

#Error

2	#Error	#Error ISLAND	0.20*0.20	4D
3	#Error	#Error ISLAND	0.20*3.80	4D
4	#Error	#Error ISLAND	0.20*0.20	4D
5	#Error	#Error ISLAND	0.20*0.20	4D
6	#Error	#Error ISLAND	0.20*0.20	4D
7	#Error	#Error GRAY	0.20*0.20	4D
8	#Error	#Error ISLAND	0.20*0.20	4D
9	#Error	#Error ISLAND	0.20*0.20	4D
10	#Error	#Error ISLAND	0.20*0.20	4D
11	#Error	#Error ISLAND	0.20*0.20	4D
12	#Error	#Error ISLAND	0.20*0.20	4D
13	#Error	#Error ISLAND	0.20*0.20	4D
14	#Error	#Error ISLAND	0.20*0.20	4D
15	#Error	#Error GRAY	0.20*0.20	4D
16	#Error	#Error GRAY	0.20*0.20	4D
17	#Error	#Error ISLAND	0.20*0.20	4D
18	#Error	#Error ISLAND	0.20*0.20	4D
19	#Error	#Error EDGE2	0.20*0.20	4D
20	#Error	#Error CORNER	0.40*0.60	4D
21	#Error	#Error CORNER	0.20*0.60	4D
22	#Error	#Error ISLAND	0.20*0.20	4D
23	#Error	#Error GRAY	0.20*0.20	4D
24	#Error	#Error EDGE1	0.20*0.20	4D
25	#Error	#Error ISLAND	0.20*0.20	4D
26	#Error	#Error ISLAND	0.20*0.20	4D
27	#Error	#Error ISLAND	0.20*0.20	4D
28	#Error	#Error GRAY	0.20*0.20	4D
29	#Error	#Error GRAY	0.20*0.20	4D
30	#Error	#Error GRAY	0.20*0.20	4D
31	#Error	#Error GRAY	0.20*0.20	4D
32	#Error	#Error GRAY	0.20*0.20	4D
33	#Error	#Error ISLAND	0.20*0.20	4D
34	#Error	#Error GRAY	0.20*0.20	4D
35	#Error	#Error ISLAND	0.20*0.20	4D
36	#Error	#Error ISLAND	0.20*0.20	4D
37	#Error	#Error ISLAND	0.20*0.20	4D
38	#Error	#Error ISLAND	0.20*0.20	4D
39	#Error	#Error ISLAND	0.20*0.20	4D
40	#Error	#Error ISLAND	0.20*0.20	4D
41	#Error	#Error ISLAND	0.20*0.20	4D
42	#Error	#Error ISLAND	0.20*0.20	4D
43	#Error	#Error ISLAND	0.20*0.20	4D
44	#Error	#Error ISLAND	0.20*0.20	4D
45	#Error	#Error ISLAND	0.20*0.20	4D
46	#Error	#Error ISLAND	0.20*0.20	4D
47	#Error	#Error GRAY	0.20*0.20	4D

#Error

48	#Error	#Error GRAY	0.20*0.20	4D
49	#Error	#Error GRAY	0.20*0.20	4D